

Building connections that last™

# Sharpe® Series 13

## Direct Mount Three-Piece Ball Valve Datasheet



# Direct Mount Three-Piece Ball Valve Sharpe® Series 13

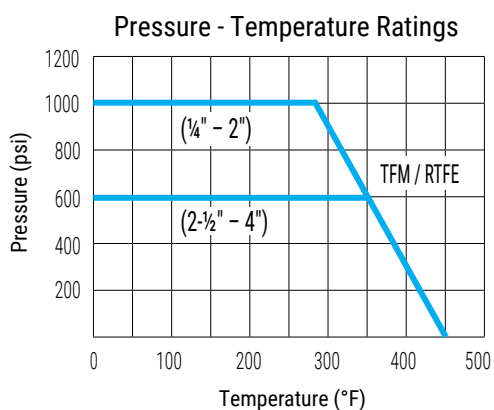


## Technical Information

Size	C <sub>v</sub>	Break Away* Torque (in-lbf)	Weight (lbs.)
1/4	6	40	1.4
3/8	6	40	1.4
1/2	24	40	1.4
3/4	35	80	2.0
1	47	110	3.4
1-1/4	81	160	5.4
1-1/2	105	190	7.2
2	240	250	11
2-1/2	320	500	20
3	580	720	32
4	970	800	51

### Note:

\*Based on clean non-lubricating fluid at listed pressures and ambient temperature. Call Sharpe® Valves for assistance for other conditions.



## Design Features

- Low Profile, Space Saving, Actuated Ball Valve
- Innovative Stem Packing System
- Quick, efficient stem packing adjustments with the actuator installed and the pipeline pressurized
- Full Port
- 1000 PSI CWP (1/4" - 2"), 600 PSI CWP (2-1/2" - 4"), 150 WSP
- 316 Stainless Steel ASTM A351 CF8M
- Carbon Steel ASTM A216 WCB Threaded and Socket Weld Ends, Stainless Steel ASTM A351 CF8M Threaded, Socket Weld and Schedule 10 or 40 Butt Weld Ends
- Direct Mount Pad Eliminates the Need for Brackets and Couplings\*
- Live Loaded, Blow-Out Proof Stem
- Lockable, Reversible, Lever Handle

## Applicable Standards

- Mounting Dimensions: ISO 5211
- Socket Weld & Threaded Ends: ASME B16.11
- Butt-Weld Ends: ASME B16.25
- Shell and Seat Pressure Test: ASME B16.34

## Options

- 4X4 Pneumatic Four Piston Actuator
- SPN II Pneumatic Two Piston Actuator
- SEA Electric Actuator
- Solenoids
- Limit Switches

### Note:

\*Mounting Bracket Must be Used for High Temperature (>180°F) and Steam Applications.

# Direct Mount Three-Piece Ball Valve Sharpe® Series 13



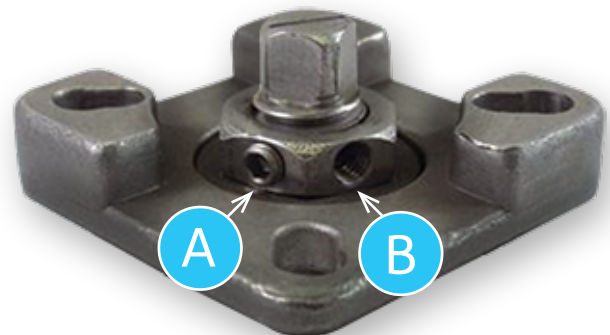
## Easy Maintenance of Actuated Valves

- Innovative Stem Packing System
- Quick In line adjustments
- Line does not need to be depressurized
- Removal of actuator not required

## Easy as 1, 2, 3

With the actuator installed:

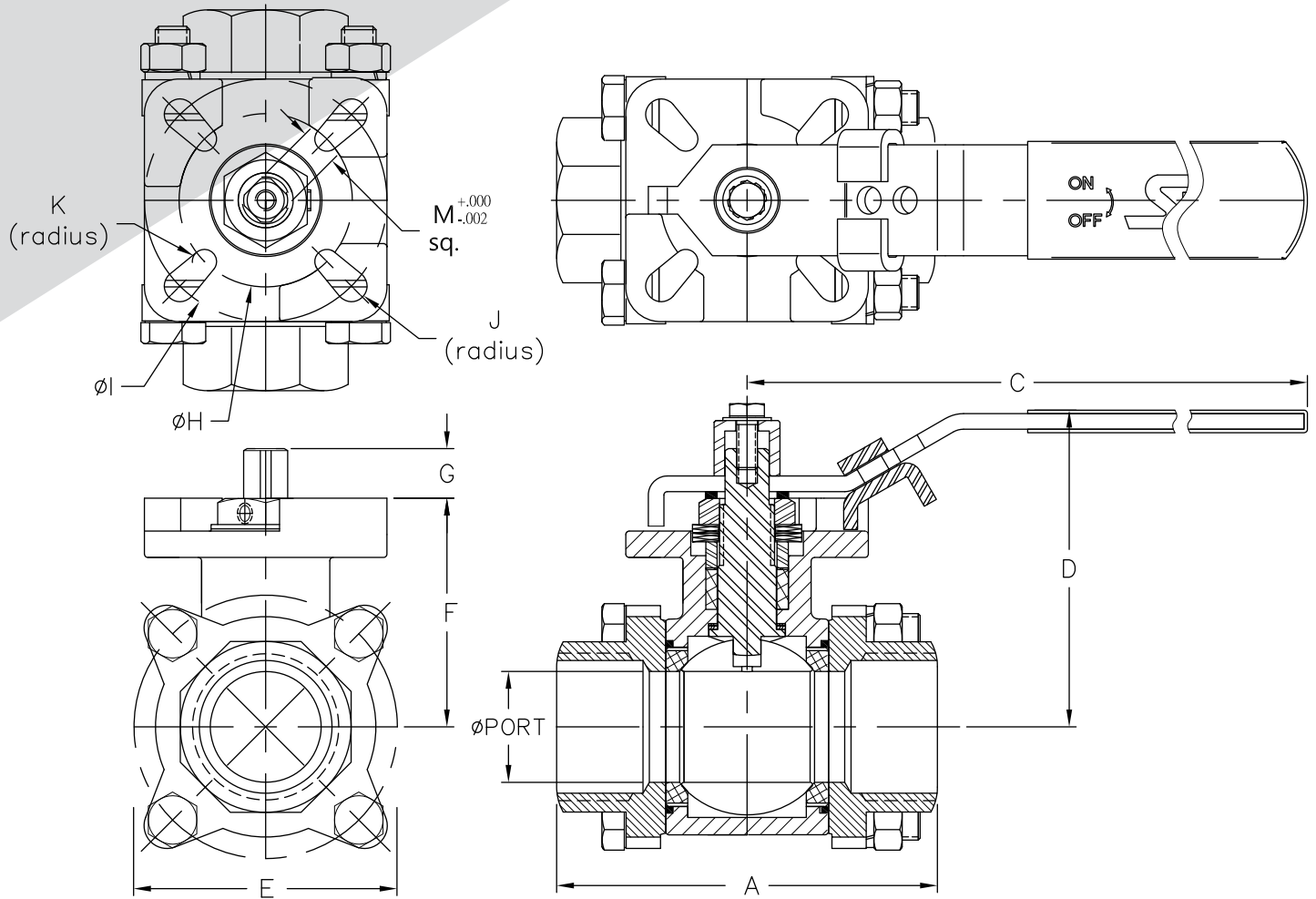
- 1 Loosen the stem nut's set screw ("A") with an allen wrench.
- 2 Insert the allen wrench in an empty hole in the stem nut ("B") and rotate the stem nut clockwise to tighten. See IOM.
- 3 Retighten the stem nut's set screw ("A") with an allen wrench.



**Note:** Removal of the actuator is not required.  
Actuator has been removed to show  
mounting pad and stem nut.

# Direct Mount Three-Piece Ball Valve

## Sharpe® Series 13



### Dimensions (Inches)

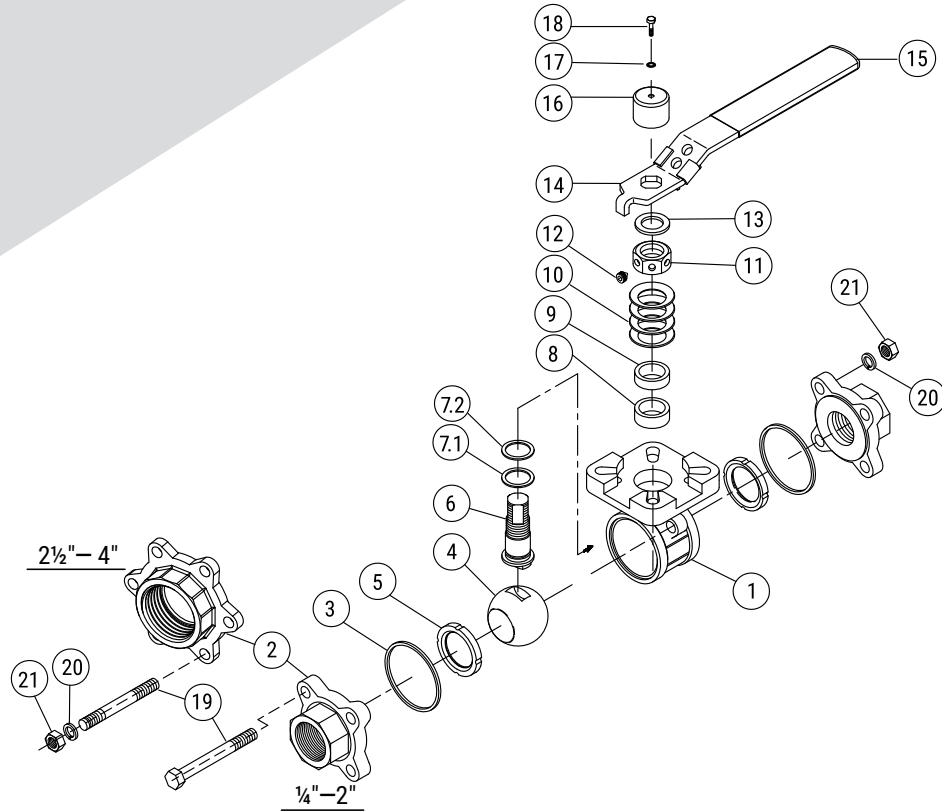
Size	PORT	A	C	D	E	F	G	Ø H	Ø I	J	K	M
¼	0.46	2.65	4.92	2.65	1.97	1.50	0.31	F03 (1.42)*	F05 (1.97)	0.130	0.110	0.350
⅜	0.50	2.65	4.92	2.65	1.97	1.50	0.31	F03 (1.42)*	F05 (1.97)	0.130	0.110	0.350
½	0.59	2.83	4.92	2.65	1.97	1.50	0.31	F03 (1.42)*	F05 (1.97)	0.130	0.110	0.350
¾	0.79	3.35	4.92	2.89	1.97	1.85	0.40	F04 (1.65)	F05 (1.97)	0.118	0.118	0.350
1	1.00	3.62	7.48	3.19	2.76	2.20	0.44	F05 (1.97)	F07 (2.76)	0.177	0.138	0.350
1-¼	1.26	4.33	7.48	3.58	2.76	2.60	0.60	F05 (1.97)	F07 (2.76)	0.177	0.138	0.430
1-½	1.50	4.83	7.48	3.80	2.76	2.81	0.54	F05 (1.97)	F07 (2.76)	0.177	0.138	0.430
2	2.00	5.58	7.48	4.15	2.76	3.17	0.54	F05 (1.97)	F07 (2.76)	0.177	0.138	0.430
2-½	2.56	6.84	9.84	5.99	4.02	3.84	0.79	F07 (2.76)**	F10 (4.02)	0.216	0.177	0.665
3	2.95	7.57	9.84	6.42	4.02	4.25	0.79	F07 (2.76)**	F10 (4.02)	0.216	0.177	0.665
4	3.94	10.78	14.96	7.05	4.92	4.86	1.00	F10 (4.02)	F12 (4.92)	0.256	0.216	0.665

#### Notes:

\*Slotted bolt holes will accept F03, F04 and F05.

\*\*F07 size only for use with a bracket.

# Direct Mount Three-Piece Ball Valve Sharpe® Series 13



## Parts & Materials

No.	Part Name	Qty.	Material
1	Body	1	316 Stainless Steel ASTM A351 CF8M
2	End Pieces	2	Carbon Steel ASTM A216 WCB or 316 Stainless Steel ASTM A351 CF8M
3	Body Seal	2	PTFE
4	Ball	1	316 Stainless Steel
5	Seat	2	TFM or RTFE
6	Stem	1	17-4PH SS (1/4" – 2") 316 Stainless Steel (2-1/2" – 4")
7.1	Thrust Bearing	1	PEEK
7.2	Thrust Bearing*	1	Nova
8	Stem Packing	1	RTFE
9	Gland Packing	1	300 Series Stainless Steel
10	Belleville Washers	4	300 Series Stainless Steel
11	McNut (Packing Nut)	1	300 Series Stainless Steel
12	Set Screw	1	300 Series Stainless Steel
13	Handle Washer**	1	300 Series Stainless Steel
14	Handle	1	300 Series Stainless Steel
15	Handle Sleeve	1	PVC
16	Stem Cover	1	300 Series Stainless Steel
17	Lock Washer	1	300 Series Stainless Steel
18	Stem Bolt	1	300 Series Stainless Steel
19	Bolt/Stud	4 / 6	300 Series Stainless Steel
20	Washer	6 / 12	300 Series Stainless Steel
21	Nut	6 / 12	300 Series Stainless Steel

### Notes:

\*1/4 – 2" valves.

\*\*2-1/2, 3, and 4" have two washers.

# Direct Mount Three-Piece Ball Valve Sharpe® Series 13



## How to order Series 13

3		13	-	6		6	TE		M			
Size		Series		Body, Ball & Stem Materials		End Material	End Connection		Seat Material		Suffixes & Options	
¼	1–½	13		6	Stainless Steel Body: CF8M SS † Ball: 316 SS Stem: 17-4PH SS (¼" to 2") Stem: 316 SS (2-½" to 4")	4	ASTM A216 Cast WCB Carbon Steel	TE	Threaded	M	TFM	
¾	2		SW					Socket Weld	R	RTFE		
½	2–½		6			ASTM A351 Cast CF8M SS †	Additional End Connections CF8M Stainless Steel Only					
¾	3											
1	4						BW	Butt-weld (Sch 40)				
1–¼	-						BW10	Butt-weld (Sch10)*				
<b>Note:</b> † Closest cast equivalent to wrought 316 SS.												

**Note:** † Closest cast equivalent to wrought 316 SS.

### Notes:

\*POA.

Responsibility for proper selection, use and maintenance of any product remains solely with the purchaser and end user.  
We reserve the right to modify or improve the designs or specifications of any product at any time without notice.

### About ASC Engineered Solutions

ASC Engineered Solutions is defined by quality—in its products, services and support. With more than 1,400 employees, the company's portfolio of precision-engineered piping support, valves and connections provides products to more than 4,000 customers across industries, such as mechanical, industrial, fire protection, oil and gas, and commercial and residential construction. Its portfolio of leading brands includes ABZ Valve®, AFCON®, Anvil®, Anvil EPS, Anvil Services, Basic-PSA, Beck®, Catawissa, Cooplet®, FlexHead®, FPPI®, Gruvlok®, J.B. Smith, Merit®, North Alabama Pipe, Quadrant®, SCI®, Sharpe®, SlideLOK®, SPF® and SprinkFLEX®. With headquarters in Commerce, CA, and Exeter, NH, ASC also has ISO 9001:2015 certified production facilities in PA, TN, IL, TX, AL, LA, KS, and RI.



[asc-es.com](http://asc-es.com)

Building connections that last™

